



MONTHLY MEMBERSHIP PROGRESS REPORT

District 39 W

Results as of: 06/30/2019

GMT: HOWARD HUDSON

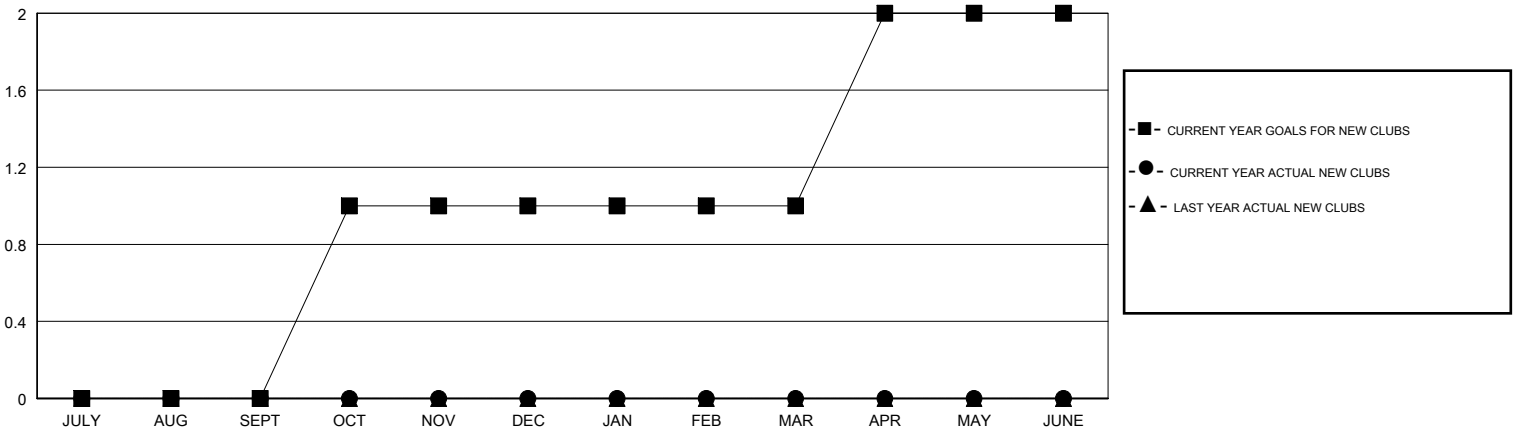
LOCATION IDAHO

GMT CA

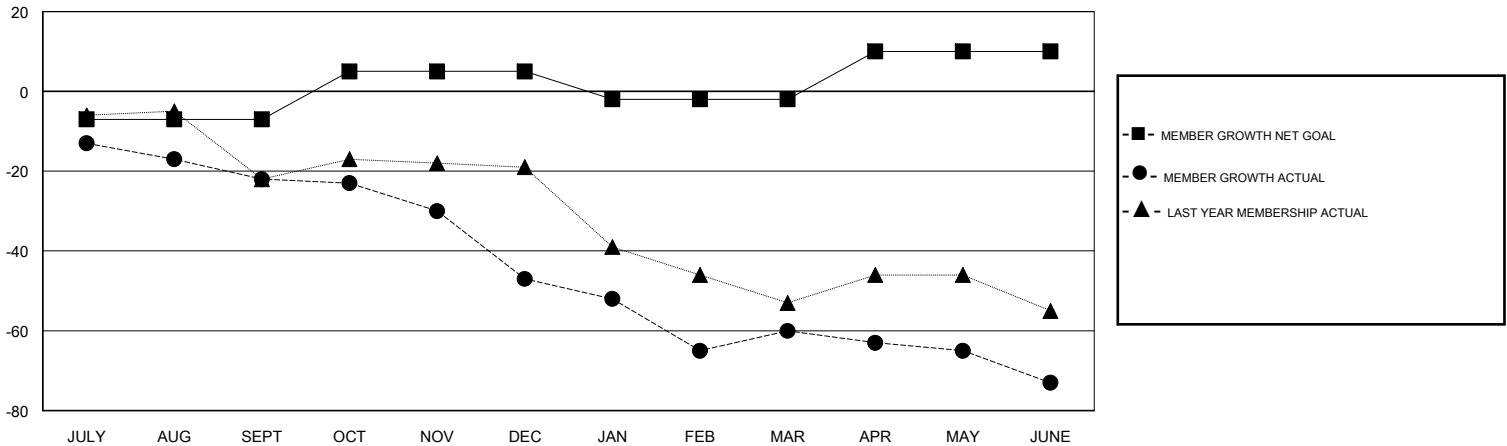
Clubs			
RESULTS FOR 2018-2019			
QUARTER	NEW CLUB GOAL	NEW CLUBS	DROPPED CLUBS
JULY/AUG/SEPT	0	0	1
OCT/NOV/DEC	1	0	0
JAN/FEB/MAR	0	0	0
APR/MAY/JUNE	1	0	1

Members			
RESULTS FOR 2018-2019			
QUARTER	MEMBER GROWTH NET GOAL	MEMBER GROWTH ACTUAL	DROPPED MEMBERS ACTUAL (including transfers)
JULY/AUG/SEPT	-7	16	38
OCT/NOV/DEC	12	12	35
JAN/FEB/MAR	-7	20	31
APR/MAY/JUNE	12	13	24

GOALS AND ACTUAL NEW CLUBS CUMULATIVE



GOALS AND ACTUAL MEMBERS CUMULATIVE



DROPPED CLUBS: 2	21 CLUBS OF 39 ADDED 1 OR MORE NEW MEMBERS	<u>GENDER DISTRIBUTION</u> MALE 591 (62.74%) FEMALE 351 (37.26%) Women Percentage Fiscal Year Goal: 40%
<u>DROPPED MEMBERS</u> DECEASED 15 CLUB CANCELLED 2 OTHER 111 TOTAL 128	CLICK HERE FOR CUMULATIVE MEMBERSHIP DATA	TOTAL FAMILY UNIT MEMBERS 220 FAMILY MEMBERS PAYING HALF DUES 112